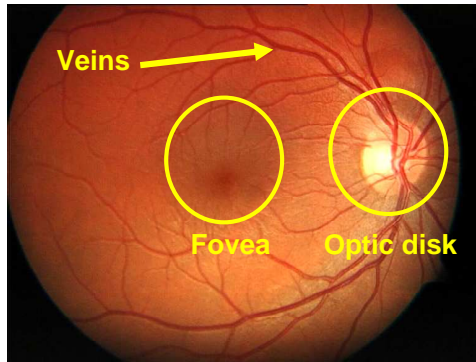


Project suggestions

- Detection of important structures in images of the eye to help with diagnosis of eye diseases (R)



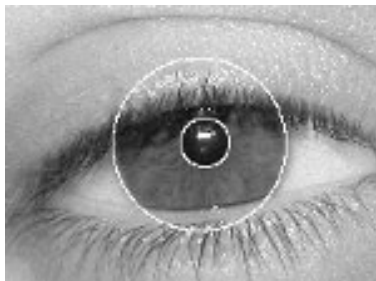
Project suggestions

- Jigsaw puzzle (R)



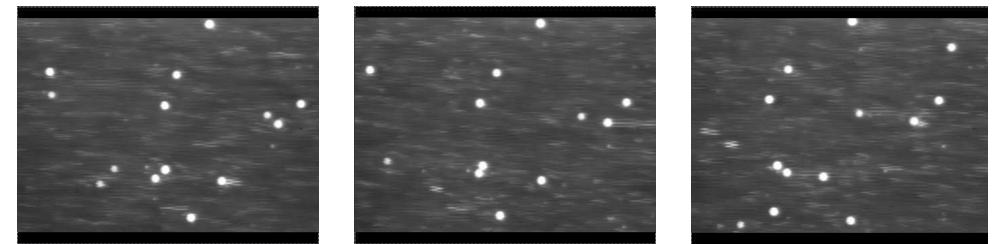
Project suggestions

- Iris detection for biometric analysis (SE)



Project suggestions

- Tracking the movement of blood cells from video recordings, to help with research on leukaemia (R)



Project suggestions

- Realistic animations of dynamic natural phenomena (cloud, fire, smoke, etc.) (R)



Project suggestions

- Computer graphics rendering of seashells

